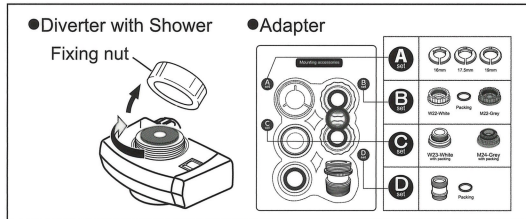
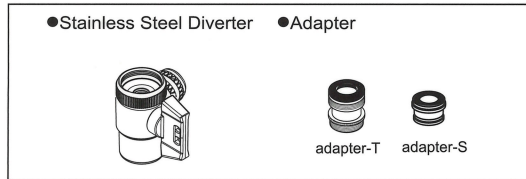
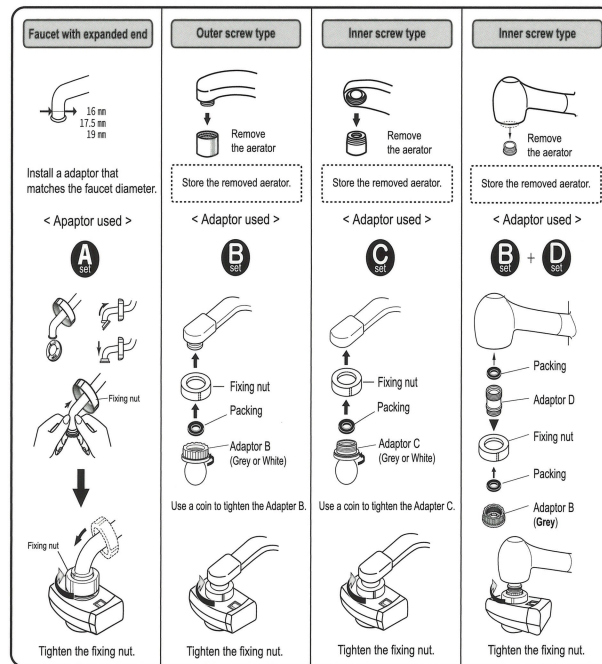


After manufacturing the machine, our Quality Department runs water through it to test and ensure functionality. After their tests, there may be some residual moisture or even water. This does not indicate that the machine has been used.

1 Installing the diverter



How to mount a single lever faucet



! If the thread diameter or thread pitch does not fit, the threads may get damaged. Make sure the thread diameter and pitch are as specified.

The faucets shown at right cannot accept the diverter.

With a sensor	Screw diameter does not match	Faucet whose possible part is short	Square faucets
When the accompanying adaptor does not fit.	When the accompanying adaptor does not fit.	When the accompanying adaptor does not fit.	
φ0.88inch/φ22mm is OK	φ0.88inch/φ22mm is OK	φ0.88inch/φ22mm is OK	
		0.96inch/24mm or bigger	

In this case, add a dedicated faucet or install a specific diverter for the faucet. For details, contact your dealer.

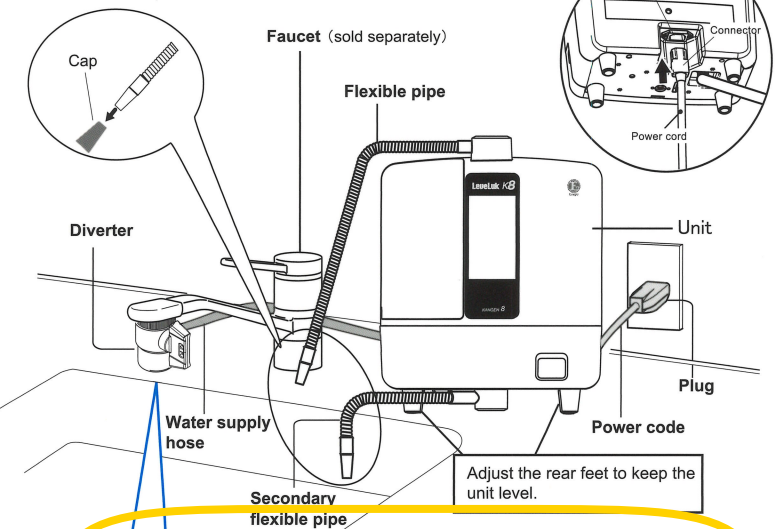
2 Setting up the Unit

Overall diagram

■Diverter: Stainless Steel Diverter

Insert the connector into the appliance inlet.

Remove the caps.



■Diverter: Diverter with Shower

